

Surge Generator for MIL-STD 1275E

The generator PG1275E is specially designed for conducted susceptibility / transient tests to voltage surge and spikes of 28 Vdc electric circuits in military vehicles according to MIL-STD 1275E.

The maximum permanent current is 16 A. This value can be extended to 400 A using the optional external diode module DM400. For the spike test, the current limit is given by the external 5 μ H LISN. Different versions of LISN are available. The generator can be fully controlled by a computer through a RS232 or USB interface. An automation software is proposed to assist the operator in the measurement of the transient parameters including the energy content of the spike and the surge.



SPECIFICATIONS

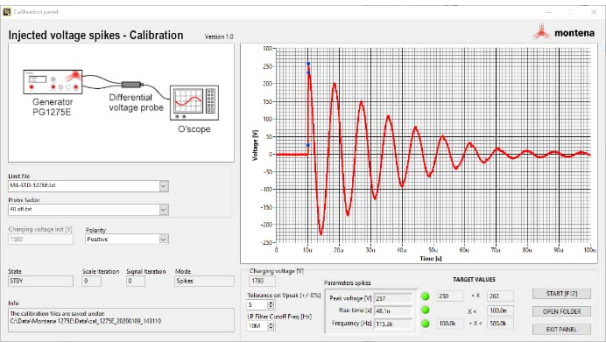
Type	PG1275E
Standard	MIL-STD-1275E
Transients supported	injected voltage spikes (§5.3.3.1.1) injected voltage surges (§5.3.3.2.1)
EUT operating voltage	28 Vdc
EUT max operating current (spike)	depends on the LISN
EUT max operating current (surge)	16 A (400 A with the DM400 diode module)
Surge open circuit voltage	0 - 200 V
Surge maximum energy	470 J (< 60 J for 70 V charging voltage)
Spike open circuit voltage	0 - 260 V
Spike maximum energy	< 2 J
Output connectors	4 mm safety sockets
Remote control	RS232 and USB
Operating temperature	10 – 40 °C
Mains operating voltage	100 – 130 Vac or 210 – 264 Vac / 50 – 60 Hz, configurable with voltage selector
Dimensions	610 x 450 x 200 mm (L x W x H)
Weight	22 kg

Optional external diode module

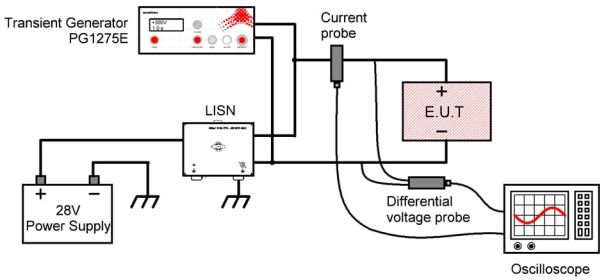
Type	DM400
Maximum continuous current	400 A
Connector	large binding posts
Dimensions	280 x 230 x 170 mm (L x W x H)
Weight	7 kg

Examples of test setup

Injected voltage spike (calibration)

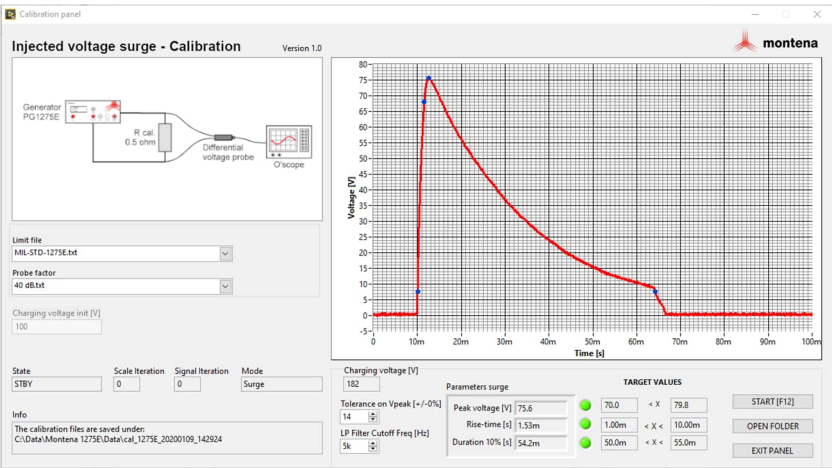


Injected voltage spike (test)



The automation software together with the voltage probe, the current probe and the oscilloscope can monitor the energy content of the spike and of the surge.

Injected voltage surge (calibration)



Ordering information

TYPE	DESCRIPTION
PG1275E	Transient generator for MIL-Std-1275E, incl. internal 16 A diode, 19" rack version

Related products / accessories

TYPE	DESCRIPTION
SW-1275E	Automation software application for MIL-STD 1275E test setup
DM400	External 400 A diode module for surge test with the PG1275E on high current power leads